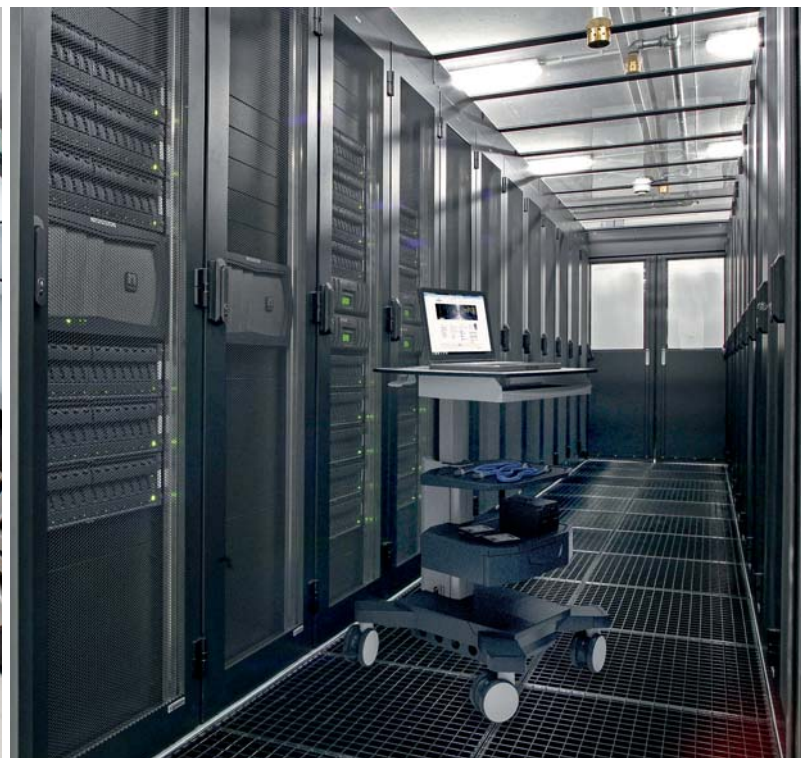


Knürr Mobile Equipment Carriers

Universal Cart Systems

Ergonomic, Modular, Future-Proof



Knürr Mobile Equipment Carriers

Mobility In Practice	2
Knürr DacoMobile®	5
Knürr MetraMobil®	21
Knürr SynergyCart®	29
Knürr Cabinet Cart – Rollo	37
Knürr Cabinet Cart	39
Accessories	46
Individual solution	53

Mobility In Practice

Modular & Industrial Solutions

Whether for the electronics laboratory, in the logistics and in the automotive sector, our extensive standard range provides diverse solutions for the safe and secure mobility of valuable equipment. Our modular designs enable versatile cart configurations, immediately or at any time later on. For demanding ESD environments Knürr provides various cart systems – ranging from robust transport trolleys through to the fully equipped measurements and diagnostics cart.

Ergonomic details also simplify daily tasks in a wide range of environments. An extensive range of accessories supplements Knürr's mobile equipment carriers as requested by the customer: Flat screen holders, ESD castors, isolating transformers and leakage detectors, cable routing elements and other practical accessories.



MOB20131



MOB20162

MET 20000

Page 21 to 27

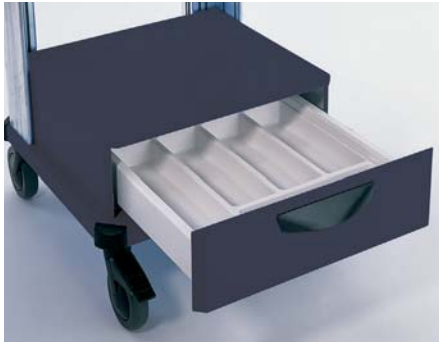
Mobile Equipment Carriers

Knürr MetraMobil®

Knürr MetraMobil® Strong points



MET 20000



MET00034



MET00037

■ Variability

- A completely individual cart can be configured from a basic frame in 2 heights, 3 colors and 5 module components.
- Ideal height adjustment with variable height setting of the shelves

■ Stability

- High load rating: up to 600 N per worktop up to 2200 N for full trolley
- Distributed load drawer extension up to 100 N
- High stability with advanced sheet steel construction

■ Functionality

- Suitable for the most varied areas of application: PC or printer station, IT-cart, logistics or laboratory

■ Cable management

- Safe cable routing with two cable ducts integrated in the extrusion
- Clear and orderly cable management with integration of accessory parts, e.g. a socket strip, which can be mounted on the extrusion.

■ Well-thought out solutions

- Vision and contact protection provided by the easy "on-off" rear panel, no tools needed
- Orderly arrangement of small material with drawer module with removeable small parts tray
- Smooth running 3/4 pull-out "Quattro" guide

■ ESD versions

- Safety and protection in demanding ESD environments provided by ESD castors and ESD powder coating.



MET00003



MET00018 Metramobil Basic height 1120 mm



MET00014 Metramobil Basic height 900 mm



MET20008 Metramobil light

Knürr MetraMobil® Basic Configurations

Replace „x“ with the number of your color choice.

- **Final digit of order number .1:**
Worktops, RAL 7035, light grey
Extrusions, RAL 9006, white aluminium
Handle, RAL 9011, graphite black
- **Final digit of order number .2:**
Worktops, NCS 3060 R80B, blue
Extrusions, RAL 9006, white aluminium
Handle, RAL 9011, graphite black
- **Final digit of order number .9:**
Worktops, RAL 7016, anthracite grey
Extrusions, RAL 9006, white aluminium
Handle, RAL 9011, graphite black

- **ESD versions:**
Note: ESD only in color variant .1 (light grey)
Final digit of order number .1:
Worktops, RAL 7035, antistatic light grey
Extrusions, RAL 9006, white aluminium
Handle: RAL 7021, dark grey, antistatic

- Design your individual trolley as follows:
 1. Select height of the basic trolley
 2. Select ESD or standard model
 3. Pick out additional modules

- The basic model can be easily expanded with system components (bear ESD in mind!)

- Worktops: set at any height

- **Dimensions**
Height, 900 mm or 1120 mm
Full width, 550 mm
Useful width, 500 mm
Depth, 580 mm
Useful depth, 440 mm
Castor Ø 125 mm

- **Load rating**
Basic rack: 2200 N
Per castor: 750 N
Surface load per worktop: 600 N

- **Material/Finish**
Basic rack consists of:
 - Extrusions: extruded aluminium, powder-coated
 - Worktops: sheet steel, powder-coat textured
 - Handle: aluminium tube, powder-coat textured

- **Supply schedule, Basic Configuration**
 - a. Height 900 mm**
 - 1 Basic rack
 - 1 Worktop with handle
 - 1 Worktop
 - b. Height 1120 mm**
 - 1 Basic rack
 - 1 Worktop with handle
 - 2 Worktops

- **Supply schedule Metramobil Light**
 - 1 Basic rack
 - 1 Worktop with handle

- **How supplied**
Modules for self installation

W	H	D	w	d	ESD	Model	Order no.	UP
550	900	580	500	440			(1) 00.709.000.x	1 unit
550	900	580	500	440	•		00.709.100.1	1 unit
550	900	580	500	440		Metramobil light (1)	00.709.200.x	1 unit
550	1120	580	500	440			(1) 00.711.000.x	1 unit
550	1120	580	500	440	•		00.711.100.1	1 unit
550	1120	580	500	440		Metramobil light (1)	00.711.200.x	1 unit

Dimensions in mm: W = Width
H = Height
D = Depth
h = Installation height
d = Useful depth
L = Length

HU = Standard height unit, 1HU = 44,45 mm
19" = 482,6 mm, (ideal for 19" components in acc. with DIN 41494)
UP = Unit of packaging
kg = Weight

Conversion: 1 inch = 25,4 mm
Replace „x“ with the number of your color choice

= assemble to order (shipped within 10 working days)

Caution: In case of larger orders, delivery times may increase.



MET00058

Knürr MetraMobil® 900

Replace „x“ with the number of your color choice.

- **Final digit of order number .1:**
Worktops, RAL 7035, light grey
Extrusions, RAL 9006, white aluminium
Handle, RAL 9011, graphite black
- **Final digit of order number .2:**
Worktops, NCS 3060 R80B, blue
Extrusions, RAL 9006, white aluminium
Handle, RAL 9011, graphite black
- **Final digit of order number .9:**
Worktops, RAL 7016, anthracite grey
Extrusions, RAL 9006, white aluminium
Handle, RAL 9011, graphite black

■ Worktops: set at any height

■ Castor: Ø 125 mm

■ **Load rating**
Basic rack: 2200 N
Per castor: 750 N
Surface load per worktop: 600 N

- **Material/Finish**
Basic rack consists of:
- Extrusions: extruded aluminium, powder-coated
- Worktops: sheet steel, powder-coat textured
Handle: aluminium tube, powder-coat textured
- **Supply schedule**
1 Basic rack
1 Worktop with handle
1 Worktop
1 Keyboard extension with mouse table
- **How supplied**
Modules for self installation

W	H	D	w	d		Order no.	UP
550	900	580	500	440	(1)	00.709.002.x	1 unit



MET00060

Knürr MetraMobil® 1120

Replace „x“ with the number of your color choice.

- **Final digit of order number .1:**
Worktops, RAL 7035, light grey
Extrusions, RAL 9006, white aluminium
Handle, RAL 9011, graphite black
- **Final digit of order number .2:**
Worktops, NCS 3060 R80B, blue
Extrusions, RAL 9006, white aluminium
Handle, RAL 9011, graphite black
- **Final digit of order number .9:**
Worktops, RAL 7016, anthracite grey
Extrusions, RAL 9006, white aluminium
Handle, RAL 9011, graphite black

■ Worktops: set at any height

■ Castor: Ø 125 mm

■ **Load rating**
Basic rack: 2200 N
Per castor: 750 N
Surface load per worktop: 600 N

- **Material/Finish**
Basic rack consists of:
- Extrusions: extruded aluminium, powder-coated
- Worktops: sheet steel, powder-coat textured
Handle: aluminium tube, powder-coat textured
- **Supply schedule**
1 Basic rack
1 Worktop with handle
2 Worktops
1 Keyboard extension with mouse table
- **How supplied**
Modules for self installation

W	H	D	w	d		Order no.	UP
550	1120	580	500	440	(1)	00.711.002.x	1 unit



MET00017

Knürr MetraMobil® 1120 with drawer module

Replace „x“ with the number of your color choice.

- **Final digit of order number .1:**
Worktops, RAL 7035, light grey
Extrusions, RAL 9006, white aluminium
Handle, RAL 9011, graphite black
- **Final digit of order number .2:**
Worktops, NCS 3060 R80B, blue
Extrusions, RAL 9006, white aluminium
Handle, RAL 9011, graphite black
- **Final digit of order number .9:**
Worktops, RAL 7016, anthracite grey
Extrusions, RAL 9006, white aluminium
Handle, RAL 9011, graphite black

- Worktops: set at any height
- Castor: Ø 125 mm

- **Load rating**
Basic rack: 2200 N
Per castor: 750 N
Surface load per worktop: 600 N

- **Material/Finish**
Basic rack consists of:
- Extrusions: extruded aluminium, powder-coated
- Worktops: sheet steel, powder-coat textured
Handle: aluminium tube, powder-coat textured

- **Supply schedule**
1 Basic rack
1 Worktop with handle
2 Worktops
1 Drawer module

- **How supplied**
Modules for self installation

W	H	D	w	d		Order no.	UP
550	1120	580	500	440	(.1)	00.711.004.x	1 unit

Dimensions in mm: W= Width
H = Height
D = Depth
h = Installation height
d = Useful depth
L = Length

HU = Standard height
unit, 1HU = 44,45 mm
19" = 482,6 mm,
(ideal for 19" components
in acc. with DIN 41494)
UP = Unit of packaging
kg = Weight

Conversion: 1 inch = 25,4 mm
Replace „x“ with the number of your color choice

= assemble to order (shipped within 10 working days)

Caution: In case of larger orders , delivery times may increase.



MET00014

Knürr MetraMobil® Worktop

Replace „x“ with the number of your color choice.

Standard versions:

Final digit of order number .1:

RAL 7035 light grey

Final digit of order number .2:

NCS 3060 R80B, blue

Final digit of order number .9:

RAL 7016 anthracite grey

ESD version:

Note: ESD only in color variant

.1 (light grey)

Final digit of order number .1:

RAL 7035 anti-static, light grey

- For storage and work purposes
- Variable setting between the vertical extrusions

ESD model in accordance with EN 100015

Supply schedule

1 Worktop
Mounting material

How supplied

Flat-packed kit

W	H	D	ESD	Model	Order no.	UP
500	25	440			(1) 00.701.020.x	1 unit
500	25	440	•		00.701.120.1	1 unit
500	25	440		with handle	(1) 00.701.021.x	1 unit
500	25	440	•	with handle	00.701.121.1	1 unit



MET00040

Knürr MetraMobil® Anti-Slide Mat Set

Note:

Anti-slide mats are not possible at the same time with keyboard extension!

- Consists of 4 anti-slide mats
- For slide-proof storage of parts to be transported
- As scratch protection for the worktop

Material

Industrial rubber, self-adhesive

Color

Black

Supply schedule

4 Anti-slide mats

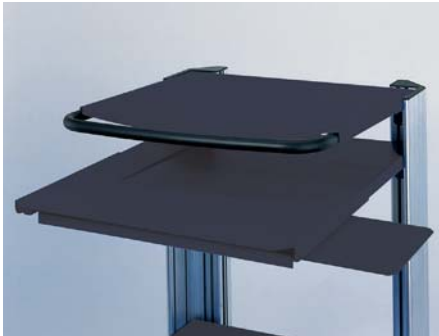
How supplied

Flat-packed kit

ESD model

- Consisting of four anti-slide mats, ESD, self-adhesive
- **Tests**
ESD test in accordance with EN 100015
- **Material**
Industrial rubber, antistatic
- **Color**
Black

W	H	D	ESD	Order no.	UP
475		430		00.701.070.9	1 unit
475		430	•	00.701.170.9	1 unit



MET00035

Knürr MetraMobil® Keyboard Extension

Replace „x“ with the number of your color choice.

Standard versions:

Final digit of order number .1:

RAL 7035 light grey

Final digit of order number .2:

NCS 3060 R80B, blue

Final digit of order number .9:

RAL 7016 anthracite grey

ESD version:

Note: ESD only in color variant .1 (light grey)

Final digit of order number .1:

RAL 7035 anti-static, light grey

- For mounting on Knürr MetraMobil® worktop and worktop with handle

- With side mouse table, left/right

- Extension 200 mm

ESD model in accordance with EN 100015

Supply schedule

1 Keyboard extension
Mounting material

How supplied

Flat-packed kit

Note

With worktop with keyboard extension, an anti-slide mat is not possible!

W	H	D	ESD		Order no.	UP
505	45	200		(1)	00.701.060.x	1 unit
505	45	200	•		00.701.160.1	1 unit



MET00017

Knürr MetraMobil® Drawer Module

Replace „x“ with the number of your color choice.

Standard versions:

Final digit of order number .1:

RAL 7035 light grey

Final digit of order number .2:

NCS 3060 R80B, blue

Final digit of order number .9:

RAL 7016 anthracite grey

ESD version:

Note: ESD only in color variant .1 (light grey)

Final digit of order number .1:

RAL 7035 anti-static, light grey

- For holding small material

- Including divider set

Material/Finish

Sheet steel, powder-coat textured

ESD model in accordance with EN 100015

Supply schedule

1 Drawer module
Mounting material

How supplied

Flat-packed kit

W	H	D	ESD		Order no.	UP
500	165	440		(1)	00.701.001.x	1 unit
500	165	440	•		00.701.101.1	1 unit

Dimensions in mm: W= Width
H = Height
D = Depth
h = Installation height
d = Useful depth
L = Length

HU = Standard height unit, 1HU = 44,45 mm
19" = 482,6 mm, (ideal for 19" components in acc. with DIN 41494)
UP = Unit of packaging
kg = Weight

Conversion: 1 inch = 25,4 mm
Replace „x“ with the number of your color choice

= assemble to order (shipped within 10 working days)

Caution: In case of larger orders , delivery times may increase.



MET00033

Knürr MetraMobil® Rear Panel

Replace „x“ with the number of your color choice.

Standard versions:

Final digit of order number .1:

RAL 7035 light grey

Final digit of order number .2:

NCS 3060 R80B, blue

Final digit of order number .9:

RAL 7016 anthracite grey

ESD version:

Note: ESD only in color variant

.1 (light grey)

Final digit of order number .1:

RAL 7035 anti-static, light grey

- With cable entry
- ESD model in accordance with EN 100015
- **Material/Finish**
Sheet steel, powder-coat textured
- **Supply schedule**
1 Rear panel
Mounting material
- **How supplied**
Flat-packed kit

W	H	D	ESD		Order no.	UP
380	900			(1)	00.701.010.x	1 unit
380	1120				00.701.011.x	1 unit
380	900		•		00.701.110.1	1 unit
380	1120		•		00.701.111.1	1 unit



MET00037

Knürr MetraMobil® Cable Management Set

- Consists of:
 - Di-Strip socket strip, 4-way, without switch
 - Strain relief
 - Two cable reel elements

- **Supply schedule**
1 Cable management set
Mounting material

- **How supplied**
Flat-packed kit

	Order no.	UP
	00.701.050.1	1 unit



MET00021

Knürr MetraMobil® Castor Set

- Load rating, 750 N per castor, Ø 125 mm

- **Color**
RAL 9011, graphite black

- **Supply schedule**
4 smooth-running castors,
2 with brake

ESD	Order no.	UP
	00.701.965.9	1 unit
•	00.128.975.9	1 unit

Page 46 to 49

Mobile Equipment Carriers

Accessories

(for DacoMobile and MetraMobil)



MEC00060

Spring nuts M5 and M6

- For clipping into T-slots at any position
- For mounting chassis rails and other components

Material
Steel, St 1203
Spring band, Nirosta 4310

Supply schedule
50 spring nuts

W	H	D	Model	Order no.	UP
			M6	01.350.405.9	1 unit
			M5	01.350.431.9	1 unit



MOB20013

Universal Arm

- 3-joint with manual clamp
- With cable/hose holder

Supply schedule
1 universal arm incl. adapter

W	H	D	Order no.	UP
			00.306.950.1	1 unit



MOB20083

Antistatic Castor Set

Load capacity – 90 kg

Color
RAL 9011, graphite black

Supply schedule
4 smooth-running castors
2 with brake

Type	Color	Diameter	Order no.	UP
ESD	Black	125	00.128.975.9	1 unit

Dimensions in mm: W = Width
H = Height
D = Depth
h = Installation height
d = Useful depth
L = Length

HU = Standard height
unit, 1HU = 44,45 mm
19" = 482,6 mm,
(ideal for 19" components
in acc. with DIN 41494)
UP = Unit of packaging
kg = Weight

Conversion: 1 inch = 25,4 mm
Replace „x“ with the number of your
color choice

P = assemble to order (shipped within
10 working days)

Caution: In case of larger orders , delivery
times may increase.



MOB00331

Cable routing set Mounting on the vertical extrusions

- **Material**
Plastic
- **Color**
RAL 7035, light grey
- **Supply schedule**
1 cable routing set
Mounting material

W	H	D	Order no.	UP
	500		00.101.001.9	1 unit



MOB00338

Cable Winder For up to 5 m of cable

- **Material**
Plastic
- **Color**
RAL 7035 light grey
- **Supply schedule**
2 Cable winders
Mounting material

W	H	D	Order no.	UP
			00.306.957.1	1 unit



MOB20099

Isolating Transformers

NTC: For switch-on peak limit are NTCs in the input power circuit before the transformer.

Basis of EC Declaration of Conformity in acc. with Directive 93/42 EEC, Annex I:
EN60601-1, EN60601-1-1
EN60601-1-1-2 (EMC)
EN14971

- **Supply schedule**
1 isolating transformer
1 mains cable, 2.5 m
with protective contact plug

- **How supplied**
Flat-packed kit

- **Note**
Additional versions available on request

W	H	D	Switch-on current limiter	Type	Power (W)	Order no.	UP
286	110	312	NTC	IMed 2000E	2000	00.100.842.9	1 unit



MOB20100

Leakage Detector Set

- Monitoring and alert unit for secondary isolation resistance
- For use in combination with isolating transformers IMed senses
- Precise warning of isolating failures

Technical data
230 VAC, IP 40

In case of defect the ELG signals an optical and acoustic warning. The resistance is monitored. If the minimum level of 50 kOhm is short fallen, an optical (LED) and acoustic (Beeper) signal is triggered. The ELG is directly connected to one of the output plugs of the IMED transformers. Its function is solely to signal isolating failures.

The ELG is exclusively approved in combination with the Noratel IMED transformers.

L	W	H	Order no.	UP
192	32	56	00.100.841.9	1 unit



MOB00042

Gas Bottle Holder

Bottle holder for 5 L or 10 L bottles up to max. Ø 150 mm

Finish
RAL 7035 light grey

Supply schedule
1 Bottle holder
1 Retaining belt
Mounting material

W	H	D	Order no.	UP
			00.100.075.1	1 unit



MOB00232

Standard Rail

Length, 460 mm

Material
High-grade steel 25x10 mm

Supply schedule
1 Standard rail
Mounting material

W	H	D	Model	Order no.	UP
460	25	10	Knürr DacoMobile®	00.128.016.1	1 unit
460	25	10	Knürr EliMobil®	00.306.940.1	1 unit



MOB20053

Side Shelf

For Knürr DacoMobile® and Knürr EliMobil®

Material
Laminated 3-layer particle board
Folding brackets: sheet steel
Finish: RAL 7035 light grey

Delivery Schedule
1 side shelf
1 set of folding brackets
Mounting hardware

W	D	Order no.	UP
300	400	00.101.250.1	1 unit

Dimensions in mm: W= Width
H = Height
D = Depth
h = Installation height
d = Useful depth
L = Length

HU = Standard height unit, 1HU = 44,45 mm
19" = 482,6 mm, (ideal for 19" components in acc. with DIN 41494)
UP = Unit of packaging
kg = Weight

Conversion: 1 inch = 25,4 mm
Replace „x“ with the number of your color choice

P = assemble to order (shipped within 10 working days)

Caution: In case of larger orders, delivery times may increase.



MOB00339

IV-Pole

- Can only be used in combination with standard rails, BN 00.128.016.1 or B/N 00.705.068.x SynergyCart® holder for infusion stands
- 4 Hooks
- Chrome-plated
- Height adjustable
- Width, approx. 110 cm

Load rating
2 kg per hook

Supply schedule
1 Serum holder including mounting (without standard rails)

W	H	D	Order no.	UP
			00.306.955.0	1 unit



MOB00337

Hook-On Block For holding test pins

Note
Only for Knürr DacoMobile® and Knürr EliMobil®

Material
Plastic

Color
RAL 9011, graphite black

Supply schedule
1 hook-on block
Mounting material

W	H	D	Order no.	UP
			00.701.090.9	1 unit



MOB20061

Multi-Functional Extrusions for Flat Screen Supports

- For mounting between the Knürr Mobile vertical extrusions
- Sturdy and stable Knürr TFT Adapter connection

Note
TFT adapters are not included in the supply schedule, please order separately

Material
- Extruded aluminum extrusions
- Sheet steel mounting plates

Finish
Metal parts – powder-coated, RAL 9006, white aluminum

How supplied
Flat-packed kit

Supply schedule
2 Funktional rails
Mounting material

W	Model	Order no.	UP
496	Knürr DacoMobile®	00.101.007.9	1 unit
596	Knürr DacoMobile®	00.101.008.9	1 unit
500	Knürr MetraMobil®	00.701.055.9	1 unit
450	Knürr EliMobil®	00.306.980.9	1 unit
550	Knürr EliMobil®	00.306.981.9	1 unit

Right from the very beginning

Project Management

Take advantage of our expert knowledge, which we have been gathering for decades in numerous customer projects in various industries.

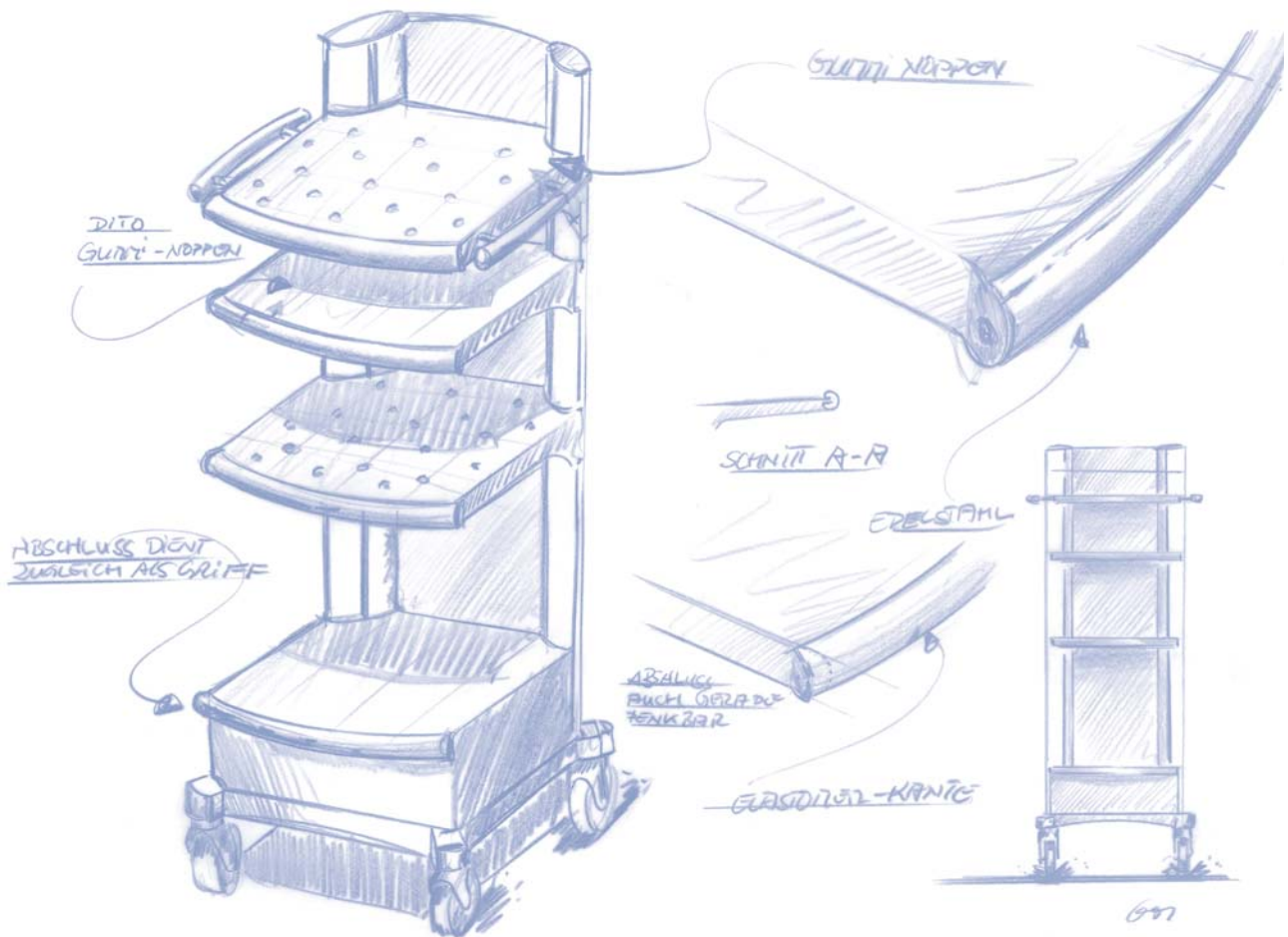
Our **project managers** are your contact partners. They are the interface to you and are responsible for the project planning in accordance with your individual requirements profile. Depending on the complexity of the task at hand, they put together a **professional team** of specialists from the most diverse disciplines.

Numerous factors are incorporated – from the creation of a list of functional specifications, budgeting and deadline planning, through to special design specifications and technical integration, right on through to compliance with standards and guidelines.

During the **product design** phase, industrial designers and technicians work closely together to harmonize form and function. With the assistance of 3D-CAD models, you check the result and can integrate your suggestions at any time.

Prototyping is also firmly in the hands of experts who are hard at work incorporating your requests and suggestions into an initial specific product.





Design and function

Design

Using the most modern CAD applications, we design your products, which set new standards in terms of technology and aesthetics. On the basis of the planned details, 3-D views, design studies and volume models emerge, which represent the most realistic state of development progress and enable modifications in line with your wishes at absolutely any time.

Your company-own corporate design is also integrated with our proposals for materials and color. Ultimately we ensure a smooth technical and technological integration while complying with UL, CSA, VDE or TÜV/GS standards. Only when these stages have been fully completed, can the first prototype be produced.



Exemplary results

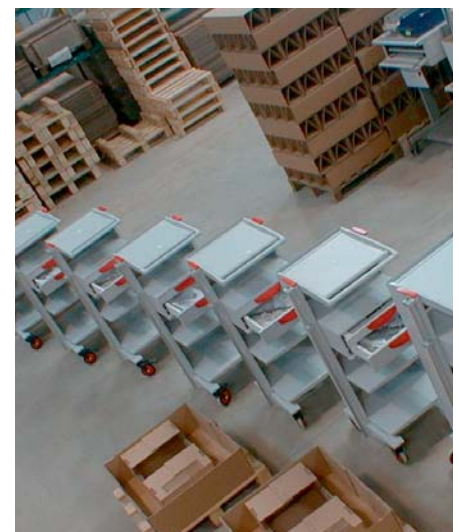
Production and logistics

After production release by the customer our sophisticated **logistics concepts** go into operation. Customized planning procedures are integrated and smoothly implemented in our **Supply Chain Management**.

We produce application-specific equipment trolleys in ultra-modern **industrial production procedures**.

And in the production phase our employees guarantee the best possible end product with their long years of experience in parts production, packaging and shipping, supported by our integrated **quality assurance procedures**.

This also includes extensive **packaging expertise**, equipped for global shipping and the toughest environmental conditions.



OEM

Individual solutions



Our standard modules mean the possibilities for unique originals are practically unlimited.

Help us with your requests! Ask us about your original and stand out on the market with your equipment trolley with customized design, harmonized with your company image (CI/CD). Our expert **Design and Technology** Team will be happy to optimally and specifically meet all customer-specific requirements – assuming the appropriate batch sizes.

“Avail of our long years of **experience**, which we use to ergonomically, technically and optimally incorporate our mature and flexibly adjusted product platforms and components into your **individual solution**.”



Ergonomically designed products and solutions from a single source

The **Knürr Technical Furniture** manufactures and develops workstations for electronics labs and mobile equipment carriers for healthcare and automotive industries. Furthermore Knürr Technical Furniture is the specialist for height adjustable control room workstations.

Learn more about Knürr Technical Furniture products and services at **www.technical-furniture.com**

Knürr Technical Furniture is a Vertiv Co. Company

Knürr GmbH

Mariakirchener Straße 38
94424 Arnstorf
Germany

T +49 8723 28 0

F +49 8723 28 138

furniture.knuerr@vertivco.com

www.technical-furniture.com

Vertiv™

Global Headquarters
1050 Dearborn Drive
P.O. Box 29186
Columbus, OH 43229, USA

T +1 614 8880246

www.vertivco.com

While every precaution has been taken to ensure accuracy and completeness herein, Knürr Technical Furniture and Vertiv Co assumes no responsibility, and disclaims all liability, for damages resulting from use of this information or for any errors or omissions. Specifications subject to change without notice.

Knürr and the Knürr logo, are trademarks and service marks of Vertiv Co. or one of its affiliated companies. ©2016 Vertiv Co. All rights reserved.