

# Mobile Equipment Carriers

Knürr MetraMobil®

Page 21 to 27



**Knürr MetraMobil®**  
**Strong points**

• **Variability**

- A completely individual cart can be configured from a basic frame in 2 heights, 3 colors and 5 module components.
- Ideal height adjustment with variable height setting of the shelves

• **Stability**

- High load rating:  
 up to 600 N per worktop  
 up to 2200 N for full trolley
- Distributed load drawer extension up to 100 N
- High stability with advanced sheet steel construction

• **Functionality**

- Suitable for the most varied areas of application: PC or printer station, IT-cart, logistics or laboratory

• **Cable management**

- Safe cable routing with two cable ducts integrated in the extrusion
- Clear and orderly cable management with integration of accessory parts, e.g. a socket strip, which can be mounted on the extrusion.

• **Well-thought out solutions**

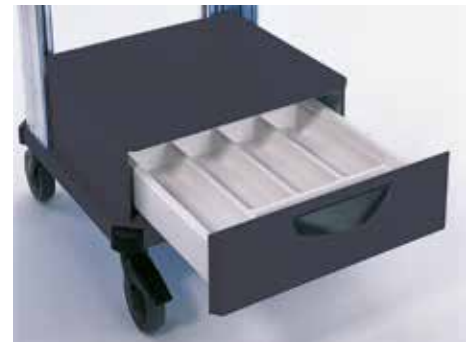
- Vision and contact protection provided by the easy "on-off" rear panel, no tools needed
- Orderly arrangement of small material with drawer module with removeable small parts tray
- Smooth running 3/4 pull-out "Quattro" guide

• **ESD versions**

- Safety and protection in demanding ESD environments provided by ESD castors and ESD powder coating.



MET 20000



MET00034



MET00003



MET00037

## Knürr MetraMobil® Basic Configurations

- Replace „x“ with the number of your color choice.
- **Final digit of order number .1:**
  - Worktops, RAL 7035, light grey
  - Extrusions, RAL 9006, white aluminium
  - Handle, RAL 9011, graphite black
- **Final digit of order number .2:**
  - Worktops, NCS 3060 R80B, blue
  - Extrusions, RAL 9006, white aluminium
  - Handle, RAL 9011, graphite black
- **Final digit of order number .9:**
  - Worktops, RAL 7016, anthracite grey
  - Extrusions, RAL 9006, white aluminium
  - Handle, RAL 9011, graphite black
- **ESD versions:**

**Note: ESD only in color variant .1 (light grey)**

**Final digit of order number .1:**

  - Worktops, RAL 7035, antistatic light grey
  - Extrusions, RAL 9006, white aluminium
  - Handle, RAL 7021, dark grey, antistatic
- **Design your individual trolley as follows:**
  1. Select height of the basic trolley
  2. Select ESD or standard model
  3. Pick out additional modules
- The basic model can be easily expanded with system components (bear ESD in mind!)
- Worktops: set at any height
- **Dimensions**
  - Height, 900 mm or 1120 mm
  - Full width, 550 mm
  - Useful width, 500 mm
  - Depth, 580 mm
  - Useful depth, 440 mm
  - Castor Ø 125 mm
- **Load rating**

**Basic rack:**

  - 2200 N

**Per castor:**

  - 750 N

**Surface load per worktop:**

  - 600 N
- **Material/Finish**

**Basic rack consists of:**

  - Extrusions: extruded aluminium, powder-coated
  - Worktops: sheet steel, powder-coat textured

**Handle:**

  - aluminium tube, powder-coat textured
- **Supply schedule, Basic Configuration**
  - a. Height 900 mm**
    - 1 Basic rack
    - 1 Worktop with handle
    - 1 Worktop
  - b. Height 1120 mm**
    - 1 Basic rack
    - 1 Worktop with handle
    - 2 Worktops
- **Supply schedule Metramobil Light**
  - 1 Basic rack
  - 1 Worktop with handle
- **How supplied**
  - Modules for self installation



Metramobil Basic height 1120 mm

MET00018



Metramobil Basic height 900 mm

MET00014



Metramobil light

MET20008

W	H	D	w	d	Model	ESD	Order no.	UP
550	900	580	500	440		(,1)	00.709.000.x	1 unit
550	900	580	500	440		•	00.709.100.1	1 unit
550	900	580	500	440	Metramobil light	(,1)	00.709.200.x	1 unit
								1 unit
550	1120	580	500	440		(,1)	00.711.000.x	1 unit
550	1120	580	500	440		•	00.711.100.1	1 unit
550	1120	580	500	440	Metramobil light	(,1)	00.711.200.x	1 unit

**Dimensions in mm:** W = Width  
H = Height  
D = Depth  
h = Installation height  
d = Useful depth  
L = Length

HU = Standard height unit, 1 HU = 44,45 mm  
19" = 482,6 mm,  
(ideal for 19" components in acc. with DIN 41494)  
UP = Unit of packaging  
kg = Weight

**Conversion:** 1 inch = 25,4 mm  
Replace „x“ with the number of your color choice

= assemble to order (shipped within 10 working days)

**Caution:** In case of larger orders, delivery times may increase.

## Knürr MetraMobil® 900

- Replace „x“ with the number of your color choice.
- **Final digit of order number .1:**
  - Worktops, RAL 7035, light grey
  - Extrusions, RAL 9006, white aluminium
  - Handle, RAL 9011, graphite black
- **Final digit of order number .2:**
  - Worktops, NCS 3060 R80B, blue
  - Extrusions, RAL 9006, white aluminium
  - Handle, RAL 9011, graphite black
- **Final digit of order number .9:**
  - Worktops, RAL 7016, anthracite grey
  - Extrusions, RAL 9006, white aluminium
  - Handle, RAL 9011, graphite black
- Worktops: set at any height
- Castor: Ø 125 mm
- **Load rating**
  - **Basic rack:**
    - 2200 N
  - **Per castor:**
    - 750 N
  - **Surface load per worktop:**
    - 600 N
- **Material/Finish**
  - **Basic rack consists of:**
    - Extrusions: extruded aluminium, powder-coated
    - Worktops: sheet steel, powder-coat textured
  - **Handle:**
    - aluminium tube, powder-coat textured
- **Supply schedule**
  - 1 Basic rack
  - 1 Worktop with handle
  - 1 Worktop
  - 1 Keyboard extension with mouse table
- **How supplied**
  - Modules for self installation



MET00058

W	H	D	w	d		Order no.	UP
550	900	580	500	440	(.1)	00.709.002.x	1 unit

## Knürr MetraMobil® 1120

- Replace „x“ with the number of your color choice.
- **Final digit of order number .1:**
  - Worktops, RAL 7035, light grey
  - Extrusions, RAL 9006, white aluminium
  - Handle, RAL 9011, graphite black
- **Final digit of order number .2:**
  - Worktops, NCS 3060 R80B, blue
  - Extrusions, RAL 9006, white aluminium
  - Handle, RAL 9011, graphite black
- **Final digit of order number .9:**
  - Worktops, RAL 7016, anthracite grey
  - Extrusions, RAL 9006, white aluminium
  - Handle, RAL 9011, graphite black
- Worktops: set at any height
- Castor: Ø 125 mm
- **Load rating**
  - **Basic rack:**
    - 2200 N
  - **Per castor:**
    - 750 N
  - **Surface load per worktop:**
    - 600 N
- **Material/Finish**
  - **Basic rack consists of:**
    - Extrusions: extruded aluminium, powder-coated
    - Worktops: sheet steel, powder-coat textured
  - **Handle:**
    - aluminium tube, powder-coat textured
- **Supply schedule**
  - 1 Basic rack
  - 1 Worktop with handle
  - 2 Worktops
  - 1 Keyboard extension with mouse table
- **How supplied**
  - Modules for self installation



MET00060

W	H	D	w	d		Order no.	UP
550	1120	580	500	440	(.1)	00.711.002.x	1 unit

## Knürr MetraMobil® 1120 with drawer module

- Replace „x“ with the number of your color choice.
- **Final digit of order number .1:**
  - Worktops, RAL 7035, light grey
  - Extrusions, RAL 9006, white aluminium
  - Handle, RAL 9011, graphite black
- **Final digit of order number .2:**
  - Worktops, NCS 3060 R80B, blue
  - Extrusions, RAL 9006, white aluminium
  - Handle, RAL 9011, graphite black
- **Final digit of order number .9:**
  - Worktops, RAL 7016, anthracite grey
  - Extrusions, RAL 9006, white aluminium
  - Handle, RAL 9011, graphite black
- Worktops: set at any height
- Castor: Ø 125 mm
- **Load rating**
  - **Basic rack:**
    - 2200 N
  - **Per castor:**
    - 750 N
  - **Surface load per worktop:**
    - 600 N
- **Material/Finish**
  - **Basic rack consists of:**
    - Extrusions: extruded aluminium, powder-coated
    - Worktops: sheet steel, powder-coat textured
  - **Handle:**
    - aluminium tube, powder-coat textured
- **Supply schedule**
  - 1 Basic rack
  - 1 Worktop with handle
  - 2 Worktops
  - 1 Drawer module
- **How supplied**
  - Modules for self installation



MET00017

W	H	D	w	d		Order no.	UP
550	1120	580	500	440	(.1)	00.711.004.x	1 unit

**Dimensions in mm:** W = Width  
H = Height  
D = Depth  
h = Installation height  
d = Useful depth  
L = Length

HU = Standard height unit, 1 HU = 44,45 mm  
19" = 482,6 mm, (ideal for 19" components in acc. with DIN 41494)  
UP = Unit of packaging  
kg = Weight

**Conversion:** 1 inch = 25,4 mm  
Replace „x“ with the number of your color choice

= assemble to order (shipped within 10 working days)

**Caution:** In case of larger orders, delivery times may increase.

## Knürr MetraMobil® Worktop

- Replace „x“ with the number of your color choice.
- **Standard versions:**
  - Final digit of order number .1:**
    - RAL 7035 light grey
  - Final digit of order number .2:**
    - NCS 3060 R80B, blue
  - Final digit of order number .9:**
    - RAL 7016 anthracite grey
- **ESD version:**
  - Note: ESD only in color variant .1 (light grey)**
  - Final digit of order number .1:**
    - RAL 7035 anti-static, light grey
- For storage and work purposes
- Variable setting between the vertical extrusions

### ESD model in accordance with EN 100015

- **Supply schedule**
  - 1 Worktop
  - Mounting material
- **How supplied**
  - Flat-packed kit



MET00014

W	H	D	Model	ESD	Order no.	UP
500	25	440		(.1)	00.701.020.x	1 unit
500	25	440		•	00.701.120.1	1 unit
500	25	440	with handle	(.1)	00.701.021.x	1 unit
500	25	440	with handle	•	00.701.121.1	1 unit

## Knürr MetraMobil® Anti-Slide Mat Set

**Note:**  
Anti-slide mats are not possible at the same time with keyboard extension!

- Consists of 4 anti-slide mats
- For slide-proof storage of parts to be transported
- As scratch protection for the worktop
- **Material**
  - Industrial rubber, self-adhesive
- **Color**
  - Black
- **Supply schedule**
  - 4 Anti-slide mats
- **How supplied**
  - Flat-packed kit

### ESD model

- Consisting of four anti-slide mats, ESD, self-adhesive
- **Tests**
  - ESD test in accordance with EN 100015
- **Material**
  - Industrial rubber, antistatic
- **Color**
  - Black



MET00040

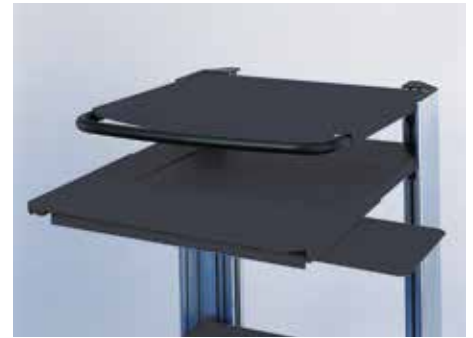
W	H	D	ESD	Order no.	UP
475		430		00.701.070.9	1 unit
475		430	•	00.701.170.9	1 unit

## Knürr MetraMobil® Keyboard Extension

- Replace „x“ with the number of your color choice.
- **Standard versions:**
  - Final digit of order number .1:**
    - RAL 7035 light grey
  - Final digit of order number .2:**
    - NCS 3060 R80B, blue
  - Final digit of order number .9:**
    - RAL 7016 anthracite grey
- **ESD version:**
  - Note: ESD only in color variant .1 (light grey)**
  - Final digit of order number .1:**
    - RAL 7035 anti-static, light grey
- For mounting on Knürr MetraMobil® worktop and worktop with handle
- With side mouse table, left/right
- Extension 200 mm

### ESD model in accordance with EN 100015

- **Supply schedule**
  - 1 Keyboard extension
  - Mounting material
- **How supplied**
  - Flat-packed kit
- **Note**
  - With worktop with keyboard extension, an anti-slide mat is not possible!



MET00035

W	H	D	ESD	Order no.	UP
505	45	200	 (.1)	00.701.060.x	1 unit
505	45	200	•	00.701.160.1	1 unit

## Knürr MetraMobil® Drawer Module

- Replace „x“ with the number of your color choice.
- **Standard versions:**
  - Final digit of order number .1:**
    - RAL 7035 light grey
  - Final digit of order number .2:**
    - NCS 3060 R80B, blue
  - Final digit of order number .9:**
    - RAL 7016 anthracite grey
- **ESD version:**
  - Note: ESD only in color variant .1 (light grey)**
  - Final digit of order number .1:**
    - RAL 7035 anti-static, light grey
- For holding small material
- Including divider set
- **Material/Finish**
  - Sheet steel, powder-coat textured

### ESD model in accordance with EN 100015

- **Supply schedule**
  - 1 Drawer module
  - Mounting material
- **How supplied**
  - Flat-packed kit




MET00017

W	H	D	ESD	Order no.	UP
500	165	440	 (.1)	00.701.001.x	1 unit
505	165	440	•	00.701.101.1	1 unit

**Dimensions in mm:** W = Width  
H = Height  
D = Depth  
h = Installation height  
d = Useful depth  
L = Length

HU = Standard height unit, 1 HU = 44,45 mm  
19" = 482,6 mm, (ideal for 19" components in acc. with DIN 41494)  
UP = Unit of packaging  
kg = Weight

**Conversion:** 1 inch = 25,4 mm  
Replace „x“ with the number of your color choice

 = assemble to order (shipped within 10 working days)

**Caution:** In case of larger orders, delivery times may increase.

## Knürr MetraMobil® Rear Panel

- Replace „x“ with the number of your color choice.
- **Standard versions:**
  - Final digit of order number .1:**
    - RAL 7035 light grey
  - Final digit of order number .2:**
    - NCS 3060 R80B, blue
  - Final digit of order number .9:**
    - RAL 7016 anthracite grey
- **ESD version:**
  - Note: ESD only in color variant .1 (light grey)**
  - Final digit of order number .1:**
    - RAL 7035 anti-static, light grey
- With cable entry
- ESD model in accordance with EN 100015
- **Material/Finish**
  - Sheet steel, powder-coat textured
- **Supply schedule**
  - 1 Rear panel
  - Mounting material
- **How supplied**
  - Flat-packed kit



MET00033

W	H	D	ESD	Order no.	UP
380	900		<b>P</b> (1)	00.701.010.x	1 unit
380	1120			00.701.011.x	1 unit
380	900		•	00.701.110.1	1 unit
380	1120		•	00.701.111.1	1 unit

## Knürr MetraMobil® Cable Management Set

- **Consists of:**
  - Di-Strip socket strip, 4-way, without switch
  - Strain relief
  - Two cable reel elements
- **Supply schedule**
  - 1 Cable management set
  - Mounting material
- **How supplied**
  - Flat-packed kit

Order no.	UP
<b>P</b> 00.701.050.1	1 unit



MET00037

## Knürr MetraMobil® Castor Set

- Load rating, 750 N per castor, Ø 125 mm
- **Color**
  - RAL 9011, graphite black
- **Supply schedule**
  - 4 smooth-running castors,
  - 2 with brake

ESD	Order no.	UP
	00.701.965.9	1 unit
•	00.128.975.9	1 unit



MET00021