

Mobile Equipment Carriers

Knürr® MetraMobil

Page 20 to 27



Knürr® MetraMobil
Strong points

• **Variability**

- A completely individual cart can be configured from a basic frame in 2 heights, 3 colors and 5 module components.
- Ideal height adjustment with variable height setting of the shelves

• **Stability**

- High load rating:
up to 600 N per worktop
up to 2200 N for full trolley
- Distributed load drawer extension up to 100 N
- High stability with advanced sheet steel construction

• **Functionality**

- Suitable for the most varied areas of application: PC or printer station, IT-cart, logistics or laboratory

• **Cable management**

- Safe cable routing with two cable ducts integrated in the extrusion
- Clear and orderly cable management with integration of accessory parts, e.g. a socket strip, which can be mounted on the extrusion.

• **Well-thought out solutions**

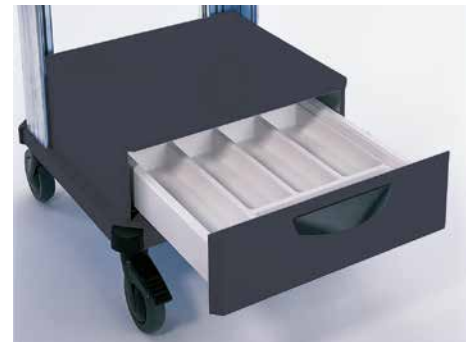
- Vision and contact protection provided by the easy "on-off" rear panel, no tools needed
- Orderly arrangement of small material with drawer module with removeable small parts tray
- Smooth running 3/4 pull-out "Quattro" guide

• **ESD versions**

- Safety and protection in demanding ESD environments provided by ESD castors and ESD powder coating.



MET 20000



MET00034



MET00003



MET00037



MET00037

Knürr® MetraMobil Basic Configurations

- Replace „x“ with the number of your color choice.
- **Final digit of order number .1:**
 - Worktops, RAL 7035, light grey
 - Extrusions, RAL 9006, white aluminium
 - Handle, RAL 9011, graphite black
- **Final digit of order number .9:**
 - Worktops, RAL 7016, anthracite grey
 - Extrusions, RAL 9006, white aluminium
 - Handle, RAL 9011, graphite black
- **ESD versions:**

Note: ESD only in color variant .1 (light grey)

Final digit of order number .1:

 - Worktops, RAL 7035, antistatic light grey
 - Extrusions, RAL 9006, white aluminium
 - Handle, RAL 7021, dark grey, antistatic
- **Design your individual trolley as follows:**
 1. Select height of the basic trolley
 2. Select ESD or standard model
 3. Pick out additional modules
- The basic model can be easily expanded with system components (bear ESD in mind!)
- Worktops: set at any height
- **Dimensions**
 - Height, 900 mm or 1120 mm
 - Full width, 550 mm
 - Useful width, 500 mm
- Depth, 580 mm
- Useful depth, 440 mm
- Castor Ø 125 mm
- **Load rating**

Basic rack:

 - 2200 N

Per castor:

 - 750 N

Surface load per worktop:

 - 600 N
- **Material/Finish**

Basic rack consists of:

 - Extrusions: extruded aluminium, powder-coated
 - Worktops: sheet steel, powder-coat textured

Handle:

 - aluminium tube, powder-coat textured
- **Supply schedule, Basic Configuration**
 - a. Height 900 mm**
 - 1 Basic rack
 - 1 Worktop with handle
 - 1 Worktop
 - b. Height 1120 mm**
 - 1 Basic rack
 - 1 Worktop with handle
 - 2 Worktops
- **Supply schedule Metramobil Light**
 - 1 Basic rack
 - 1 Worktop with handle
- **How supplied**
 - Modules for self installation



Metramobil Basic height 1120 mm

MET00018



Metramobil Basic height 900 mm

MET00014



Metramobil light

MET20008

W	H	D	w	d	Model	ESD	Order no.	UP
550	900	580	500	440			00.709.000.x	1 unit
550	900	580	500	440		•	00.709.100.1	1 unit
550	900	580	500	440	Metramobil light		00.709.200.x	1 unit
								1 unit
550	1120	580	500	440			00.711.000.x	1 unit
550	1120	580	500	440		•	00.711.100.1	1 unit
550	1120	580	500	440	Metramobil light		00.711.200.x	1 unit

Dimensions in mm: W = Width
H = Height
D = Depth
h = Installation height
d = Useful depth
L = Length

HU = Standard height unit, 1 HU = 44,45 mm
19" = 482,6 mm,
(ideal for 19" components in acc. with DIN 41494)
UP = Unit of packaging
kg = Weight

Conversion: 1 inch = 25,4 mm

Replace „x“ with the number of your color choice

Knürr® MetraMobil 900

- Replace „x“ with the number of your color choice.
- **Final digit of order number .1:**
 - Worktops, RAL 7035, light grey
 - Extrusions, RAL 9006, white aluminium
 - Handle, RAL 9011, graphite black
- **Final digit of order number .9:**
 - Worktops, RAL 7016, anthracite grey
 - Extrusions, RAL 9006, white aluminium
 - Handle, RAL 9011, graphite black
- Worktops: set at any height
- Castor: Ø 125 mm
- **Load rating**
 - **Basic rack:**
 - 2200 N
 - **Per castor:**
 - 750 N
 - **Surface load per worktop:**
 - 600 N

- **Material/Finish**
 - **Basic rack consists of:**
 - Extrusions: extruded aluminium, powder-coated
 - Worktops: sheet steel, powder-coat textured
 - **Handle:**
 - aluminium tube, powder-coat textured
- **Supply schedule**
 - 1 Basic rack
 - 1 Worktop with handle
 - 1 Worktop
 - 1 Keyboard extension with mouse table
- **How supplied**
 - Modules for self installation



MET00058

W	H	D	w	d	Order no.	UP
550	900	580	500	440	00.709.002.x	1 unit

Knürr® MetraMobil 1120

- Replace „x“ with the number of your color choice.
- **Final digit of order number .1:**
 - Worktops, RAL 7035, light grey
 - Extrusions, RAL 9006, white aluminium
 - Handle, RAL 9011, graphite black
- **Final digit of order number .9:**
 - Worktops, RAL 7016, anthracite grey
 - Extrusions, RAL 9006, white aluminium
 - Handle, RAL 9011, graphite black
- Worktops: set at any height
- Castor: Ø 125 mm
- **Load rating**
 - **Basic rack:**
 - 2200 N
 - **Per castor:**
 - 750 N
 - **Surface load per worktop:**
 - 600 N

- **Material/Finish**
 - **Basic rack consists of:**
 - Extrusions: extruded aluminium, powder-coated
 - Worktops: sheet steel, powder-coat textured
 - **Handle:**
 - aluminium tube, powder-coat textured
- **Supply schedule**
 - 1 Basic rack
 - 1 Worktop with handle
 - 2 Worktops
 - 1 Keyboard extension with mouse table
- **How supplied**
 - Modules for self installation



MET00060

W	H	D	w	d	Order no.	UP
550	1120	580	500	440	00.711.002.x	1 unit

Knürr® MetraMobil 1120 with drawer module

- Replace „x“ with the number of your color choice.
- **Final digit of order number .1:**
 - Worktops, RAL 7035, light grey
 - Extrusions, RAL 9006, white aluminium
 - Handle, RAL 9011, graphite black
- **Final digit of order number .9:**
 - Worktops, RAL 7016, anthracite grey
 - Extrusions, RAL 9006, white aluminium
 - Handle, RAL 9011, graphite black
- Worktops: set at any height
- Castor: Ø 125 mm
- **Load rating**
 - **Basic rack:**
 - 2200 N
 - **Per castor:**
 - 750 N
 - **Surface load per worktop:**
 - 600 N
- **Material/Finish**
 - **Basic rack consists of:**
 - Extrusions: extruded aluminium, powder-coated
 - Worktops: sheet steel, powder-coat textured
 - **Handle:**
 - aluminium tube, powder-coat textured
- **Supply schedule**
 - 1 Basic rack
 - 1 Worktop with handle
 - 2 Worktops
 - 1 Drawer module
- **How supplied**
 - Modules for self installation



MET00017

W	H	D	w	d	Order no.	UP
550	1120	580	500	440	00.711.004.x	1 unit

Dimensions in mm: W = Width
 H = Height
 D = Depth
 h = Installation height
 d = Useful depth
 L = Length

HU = Standard height unit, 1 HU = 44,45 mm
 19" = 482,6 mm,
 (ideal for 19" components in acc. with DIN 41494)

UP = Unit of packaging
 kg = Weight

Conversion: 1 inch = 25,4 mm

Replace „x“ with the number of your color choice

Knürr® MetraMobil Worktop

- Replace „x“ with the number of your color choice.
- **Standard versions:**
 - Final digit of order number .1:**
 - RAL 7035 light grey
 - Final digit of order number .9:**
 - RAL 7016 anthracite grey
- **ESD version:**
 - Note: ESD only in color variant .1 (light grey)**
 - Final digit of order number .1:**
 - RAL 7035 anti-static, light grey
- For storage and work purposes
- Variable setting between the vertical extrusions

ESD model in accordance with EN 100015

- **Supply schedule**
 - 1 Worktop
 - Mounting material
- **How supplied**
 - Flat-packed kit



MET00014

W	H	D	Model	ESD	Order no.	UP
500	25	440			00.701.020.x	1 unit
500	25	440		•	00.701.120.1	1 unit
500	25	440	with handle		00.701.021.x	1 unit
500	25	440	with handle	•	00.701.121.1	1 unit

Knürr® MetraMobil Anti-Slide Mat Set

Note:
Anti-slide mats are not possible at the same time with keyboard extension!

- Consists of 4 anti-slide mats
- For slide-proof storage of parts to be transported
- As scratch protection for the worktop
- **Material**
 - Industrial rubber, self-adhesive
- **Color**
 - Black

- **Supply schedule**
 - 4 Anti-slide mats
- **How supplied**
 - Flat-packed kit

Antistatic version

- Consisting of four anti-slip mats, antistatic, self-adhesive
- **Material**
 - Industrial rubber, antistatic
- **Color**
 - Black

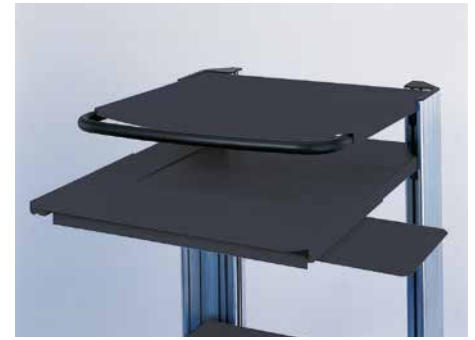


MET00040

W	H	D	Antistatic	Order no.	UP
475		430		00.701.070.9	1 unit
475		430	•	00.701.170.9	1 unit

Knürr® MetraMobil Keyboard Extension

- Replace „x“ with the number of your color choice.
 - **Standard versions:**
 - Final digit of order number .1:**
 - RAL 7035 light grey
 - Final digit of order number .9:**
 - RAL 7016 anthracite grey
 - **ESD version:**
 - Note: ESD only in color variant .1 (light grey)**
 - Final digit of order number .1:**
 - RAL 7035 anti-static, light grey
 - For mounting on Knürr MetraMobil worktop and worktop with handle
 - With side mouse table, left/right
 - Extension 200 mm
- ESD model in accordance with EN 100015**
- **Supply schedule**
 - 1 Keyboard extension
 - Mounting material
 - **How supplied**
 - Flat-packed kit
 - **Note**
 - With worktop with keyboard extension, an anti-slide mat is not possible!



MET00035

W	H	D	ESD	Order no.	UP
505	45	200		00.701.060.x	1 unit
505	45	200	•	00.701.160.1	1 unit

Knürr® MetraMobil Drawer Module

- Replace „x“ with the number of your color choice.
 - **Standard versions:**
 - Final digit of order number .1:**
 - RAL 7035 light grey
 - Final digit of order number .9:**
 - RAL 7016 anthracite grey
 - **ESD version:**
 - Note: ESD only in color variant .1 (light grey)**
 - Final digit of order number .1:**
 - RAL 7035 anti-static, light grey
 - For holding small material
 - Including divider set
 - **Material/Finish**
 - Sheet steel, powder-coat textured
- ESD model in accordance with EN 100015**
- **Supply schedule**
 - 1 Drawer module
 - Mounting material
 - **How supplied**
 - Flat-packed kit



MET00017

W	H	D	ESD	Order no.	UP
500	165	440		00.701.001.x	1 unit
505	165	440	•	00.701.101.1	1 unit

Dimensions in mm: W = Width
H = Height
D = Depth
h = Installation height
d = Useful depth
L = Length
HU = Standard height unit, 1 HU = 44,45 mm
19" = 482,6 mm,
(ideal for 19" components in acc. with DIN 41494)
UP = Unit of packaging
kg = Weight

Conversion: 1 inch = 25,4 mm
Replace „x“ with the number of your color choice

Knürr® MetraMobil Rear Panel

- Replace „x“ with the number of your color choice.
- **Standard versions:**
 - Final digit of order number .1:**
 - RAL 7035 light grey
 - Final digit of order number .9:**
 - RAL 7016 anthracite grey
- **ESD version:**
 - Note: ESD only in color variant .1 (light grey)**
 - Final digit of order number .1:**
 - RAL 7035 anti-static, light grey
- With cable entry
- ESD model in accordance with EN 100015
- **Material/Finish**
 - Sheet steel, powder-coat textured
- **Supply schedule**
 - 1 Rear panel
 - Mounting material
- **How supplied**
 - Flat-packed kit

W	H	D	ESD	Order no.	UP
380	900			00.701.010.x	1 unit
380	1120			00.701.011.x	1 unit
380	900		•	00.701.110.1	1 unit
380	1120		•	00.701.111.1	1 unit



MET00033

Knürr® MetraMobil Cable Management Set

- **Consists of:**
 - Di-Strip socket strip, 4-way, without switch
 - Strain relief
 - Two cable reel elements
- **Supply schedule**
 - 1 Cable management set
 - Mounting material
- **How supplied**
 - Flat-packed kit

Order no.	UP
00.701.050.1	1 unit



MET00037

Knürr® MetraMobil Castor Set

- Load rating, 750 N per castor, Ø 125 mm
- **Color**
 - RAL 9011, graphite black
- **Supply schedule**
 - 4 smooth-running castors,
 - 2 with brake

ESD	Order no.	UP
	00.701.965.9	1 unit
•	00.128.975.9	1 unit



MET00021

Mobile Equipment Carriers

Accessories

(for DacoMobile and MetraMobil)

Page 28 to 31



Spring nuts M5 and M6

- For clipping into T-slots at any position
 - For mounting chassis rails and other components
- **Material**
 - Steel, St 1203
 - Spring band, Nirosta 4310
 - **Supply schedule**
 - 50 spring nuts

W	H	D	Model	Order no.	UP
			M6	01.350.405.9	1 unit
			M5	01.350.431.9	1 unit



MEC00060

Antistatic Castor Set

- Load capacity – 90 kg
- **Color**
 - RAL 9011, graphite black
- **Supply schedule**
 - 4 smooth-running castors
 - 2 with brake

Type	Color	Diameter	Order no.	UP
ESD	Black	125	00.128.975.9	1 unit



MOB20083

Dimensions in mm: W = Width
 H = Height
 D = Depth
 h = Installation height
 d = Useful depth
 L = Length

HU = Standard height unit, 1 HU = 44,45 mm
 19" = 482,6 mm,
 (ideal for 19" components in acc. with DIN 41494)
 UP = Unit of packaging
 kg = Weight

Conversion: 1 inch = 25,4 mm
 Replace „x“ with the number of your color choice

Cable routing set Mounting on the vertical extrusions

- **Material**
 - Plastic
- **Color**
 - RAL 7035, light grey
- **Supply schedule**
 - 1 cable routing set
 - Mounting material

W	H	D	Order no.	UP
	500		00.101.001.9	1 unit



MOB00331

Cable Winder For up to 5 m of cable

- **Material**
 - Plastic
- **Color**
 - RAL 7035 light grey
- **Supply schedule**
 - 2 Cable winders
 - Mounting material

W	H	D	Order no.	UP
			00.306.957.1	1 unit



MOB00338

Isolating Transformers

NTC: For switch-on peak limit are NTCs in the input power circuit before the transformer.

Basis of EC Declaration of Conformity in acc. with Directive 93/42 EEC, Annex I:

- EN60601-1, EN60601-1-1
- EN60601-1-1-2 (EMC)
- EN14971

- **Supply schedule**
 - 1 isolating transformer
 - 1 mains cable, 2.5 m with protective contact plug
- **How supplied**
 - Flat-packed kit
- **Note**
 - Further versions and leakage detectors on request



MOB20099

W	H	D	Switch-on current limiter	Type	Power (W)	Order no.	UP
286	110	312	NTC	IMed 2000E	2000	00.100.842.9	1 unit

Side Shelf For Knürr DacoMobile and Knürr EliMobil

- **Material**
 - Laminated 3-layer particle board
 - Folding brackets: sheet steel
 - Finish: RAL 7035 light grey
- **Delivery Schedule**
 - 1 side shelf
 - 1 set of folding brackets
 - Mounting hardware

W	H	D	Order no.	UP
300		400	00.101.250.1	1 unit



MOB20053

Multi-Functional Extrusions for Flat Screen Supports

- For mounting between the Knürr Mobile vertical extrusions
- Sturdy and stable Knürr TFT Adapter connection
- **Note**
 - TFT adapters are not included in the supply schedule, please order separately
- **Material**
 - Extruded aluminum extrusions
 - Sheet steel mounting plates
- **Finish**
 - Metal parts – powder-coated, RAL 9006, white aluminum
- **How supplied**
 - Flat-packed kit
- **Supply schedule**
 - 2 Funktional rails
 - Mounting material

W	Model	Order no.	UP
496	Knürr® DacoMobile	00.101.007.9	1 unit
596	Knürr® DacoMobile	00.101.008.9	1 unit
500	Knürr® MetraMobil	00.701.055.9	1 unit



MOB20061

Dimensions in mm: W = Width
H = Height
D = Depth
h = Installation height
d = Useful depth
L = Length
HU = Standard height
unit, 1 HU = 44.45 mm
19" = 482.6 mm,
(ideal for 19" components
in acc. with DIN 41494)
UP = Unit of packaging
kg = Weight

Conversion: 1 inch = 25,4 mm
Replace „x“ with the number of your
color choice

Right from the very beginning

PROJECT MANAGEMENT

Take advantage of our expert knowledge, which we have been gathering for decades in numerous customer projects in various industries.

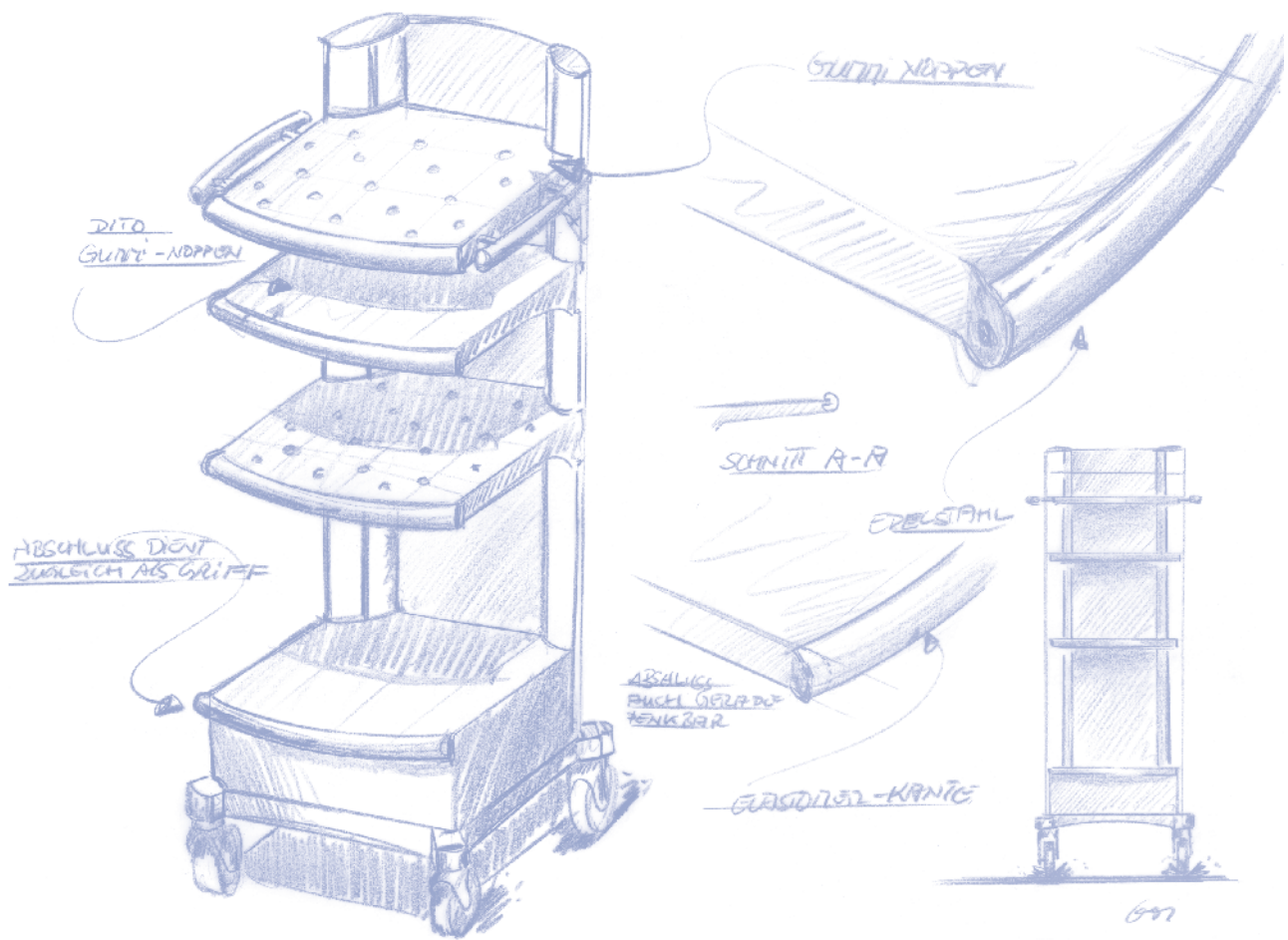
Our **project managers** are your contact partners. They are the interface to you and are responsible for the project planning in accordance with your individual requirements profile. Depending on the complexity of the task at hand, they put together a **professional team** of specialists from the most diverse disciplines. Numerous factors are incorporated – from the creation of a list of functional specifications, budgeting and deadline

planning, through to special design specifications and technical integration, right on through to compliance with standards and guidelines.

During the **product design** phase, industrial designers and technicians work closely together to harmonize form and function. With the assistance of 3D-CAD models, you check the result and can integrate your suggestions at any time.

Prototyping is also firmly in the hands of experts who are hard at work incorporating your requests and suggestions into an initial specific product.





Design and function

DESIGN

Using the most modern CAD applications, we design your products, which set new standards in terms of technology and aesthetics. On the basis of the planned details, 3-D views, design studies and volume models emerge, which represent the most realistic state of development progress and enable modifications in line with your wishes at absolutely any time.

Your company-own corporate design is also integrated with our proposals for materials and color. Ultimately we ensure a smooth technical and technological integration while complying with UL, CSA, VDE or TÜV/GS standards. Only when these stages have been fully completed, can the first prototype be produced.



Exemplary results

PRODUCTION AND LOGISTIC

After production release by the customer our sophisticated **logistics concepts** go into operation. Customized planning procedures are integrated and smoothly implemented in our **Supply Chain Management**.

We produce application-specific equipment trolleys in ultra-modern **industrial production procedures**.

And in the production phase our employees guarantee the best possible end product with their long years of experience in parts production, packaging and shipping, supported by our integrated **quality assurance procedures**.

This also includes extensive **packaging expertise**, equipped for global shipping and the toughest environmental conditions.



OEM**INDIVIDUAL SOLUTION**

Our standard modules mean the possibilities for unique originals are practically unlimited.

Help us with your requests! Ask us about your original and stand out on the market with your equipment trolley with customized design, harmonized with your company image (CI/CD). Our expert **Design and Technology** Team will be happy to optimally and specifically meet all customerspecific requirements – assuming the appropriate batch sizes.

“Avail of our long years of **experience**, which we use to ergonomically, technically and optimally incorporate our mature and flexibly adjusted product platforms and components into your **individual solution.**”

